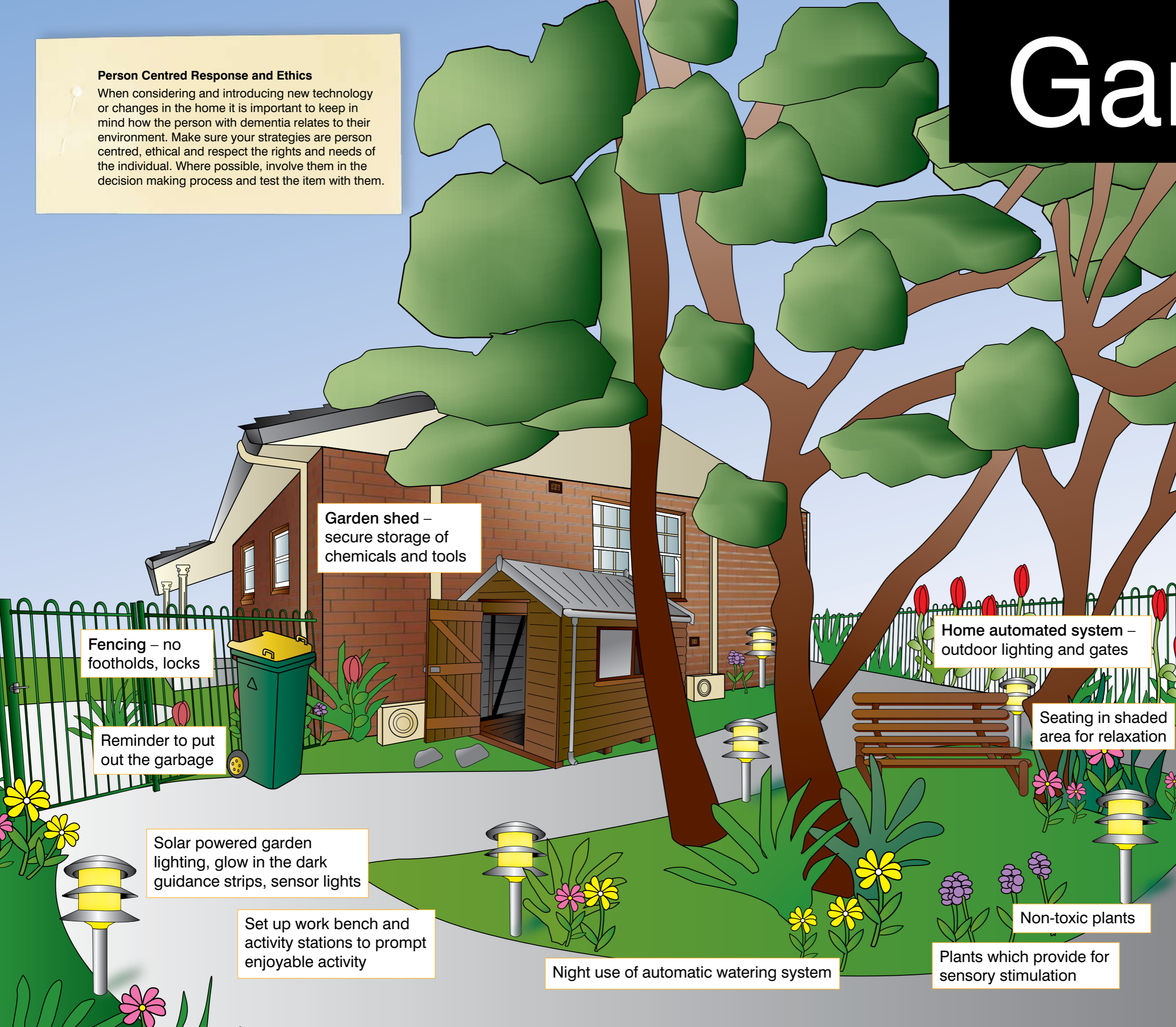


# Garden

## Person Centred Response and Ethics

When considering and introducing new technology or changes in the home it is important to keep in mind how the person with dementia relates to their environment. Make sure your strategies are person centred, ethical and respect the rights and needs of the individual. Where possible, involve them in the decision making process and test the item with them.



These are common issues a person with dementia may experience in the garden and outdoor areas of their home:

## Independence

- safe outdoor activity
- poor garbage storage and disposal

## Safety and security

- uneven pathways and surfaces
- appearance of well maintained yard
- poisoning (plants, chemicals)

## Leisure and lifestyle

- gardening
- craft
- relaxation



The views expressed in this work are the views of its author(s) and not necessarily those of the Commonwealth of Australia. Despite any permitted use of the Graphic Design Guidelines for Training Partners and Projects copyright material, the reader needs to be aware that the information contained in this work is not necessarily endorsed, and its contents may not have been approved or reviewed, by the Australian Government Department of Health and Ageing.