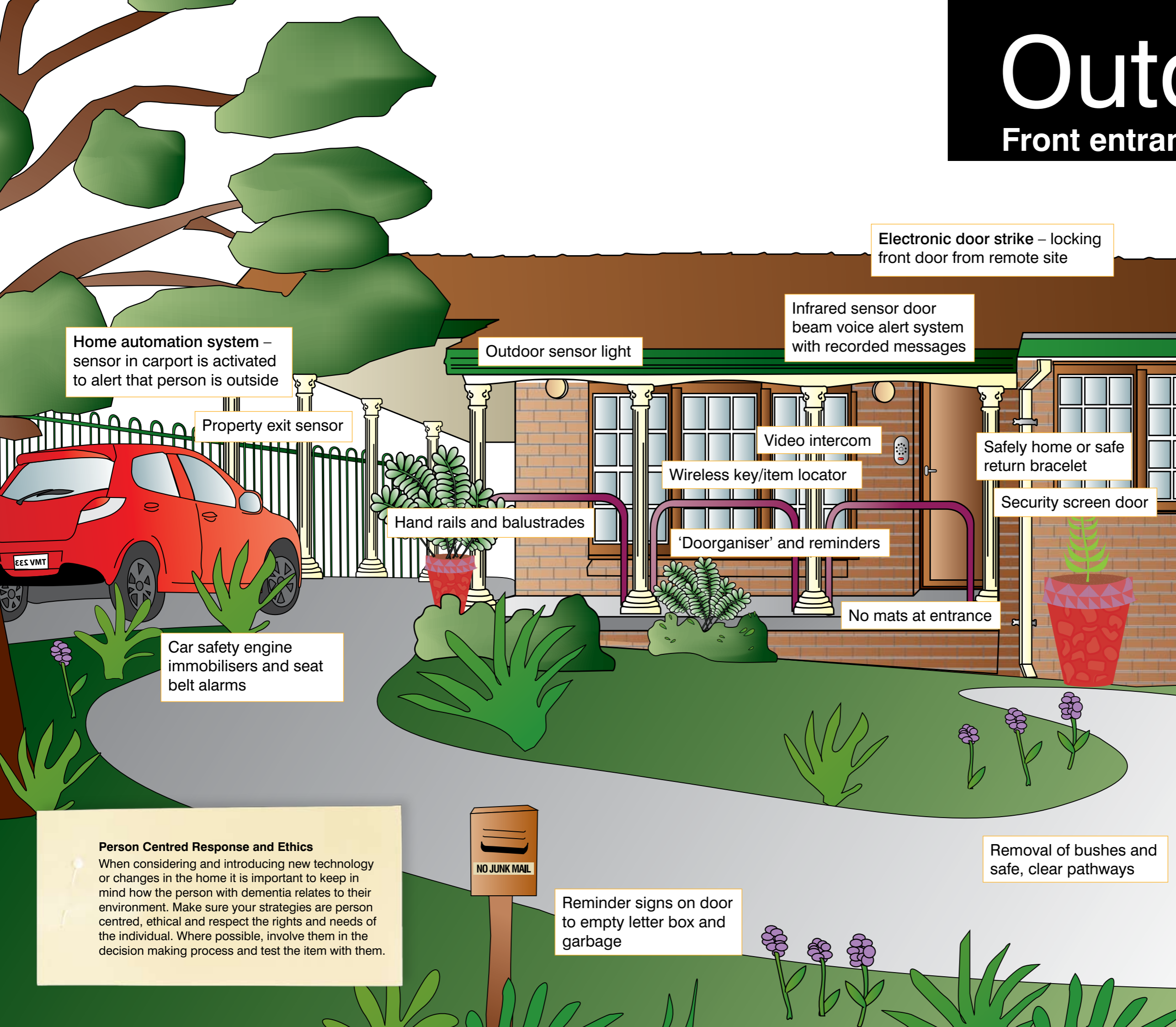


# Outdoors

## Front entrance of the home



Home automation system – sensor in carport is activated to alert that person is outside

Property exit sensor

Car safety engine immobilisers and seat belt alarms

Outdoor sensor light

Hand rails and balustrades

NO JUNK MAIL

Reminder signs on door to empty letter box and garbage

Infrared sensor door beam voice alert system with recorded messages

Video intercom

Wireless key/item locator

'Doorganiser' and reminders

No mats at entrance

Electronic door strike – locking front door from remote site

Safely home or safe return bracelet

Security screen door

Removal of bushes and safe, clear pathways

These are common issues a person with dementia may experience using the entrance and exit to their home:

### Independence

- mobility
- paying bills and collecting mail
- disorientation

### Safety and security

- walking away from the house and becoming lost
- locking doors and windows
- using stairs
- unsolicited callers
- driving and transport

### Leisure and lifestyle

- access for visiting friends and carers
- attending social activities and appointments



### Person Centred Response and Ethics

When considering and introducing new technology or changes in the home it is important to keep in mind how the person with dementia relates to their environment. Make sure your strategies are person centred, ethical and respect the rights and needs of the individual. Where possible, involve them in the decision making process and test the item with them.

The views expressed in this work are the views of its author(s) and not necessarily those of the Commonwealth of Australia. Despite any permitted use of the Graphic Design Guidelines for Training Partners and Projects copyright material, the reader needs to be aware that the information contained in this work is not necessarily endorsed, and its contents may not have been approved or reviewed, by the Australian Government Department of Health and Ageing.